

Pepper Weevil

Anthonomus eugeni

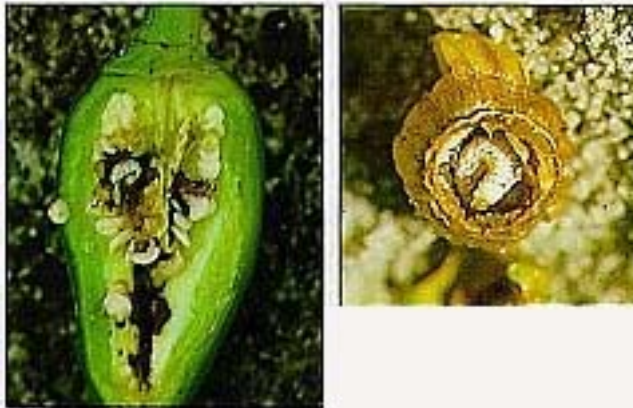
Cause: *Anthonomus eugeni* (Cano). Black weevil sparsely covered with gray or tan hairs. Larvae are white with brown heads.

Symptoms: Presence of the weevil larvae and excrement in chile fruit; feeding sites on chile fruit. Extreme fruit dropping.

Demographics: Found in the tropical areas of the world, also in New Mexico.

Importance: Severe pest in many chile growing regions, decreases yield and quality.

Control: Insecticides and predators.



Photos Courtesy of Texas A & M Entomology
New Mexico State University
Department of Agronomy and Horticulture
©Copyright 2005 All Rights Reserved

