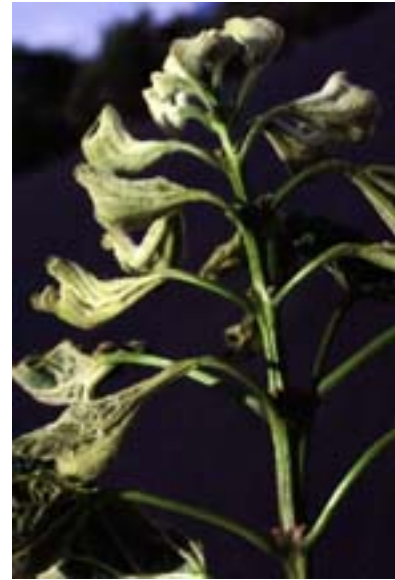


# HERBICIDE INJURY



Cause: Plants may be exposed by spray drift, volatile drift, contaminated sprayers, or contaminated waters.

Symptoms: The developing leaves of affected plants characteristically form narrowed laminae and prominent raised veins. Leaf margin may become waxy. Plants that receive high doses may develop leaves composed primarily of the midrib with little or no laminar development. Flower drop and development of adventitious roots on the lower stem may occur.

Demographics: Varies

Importance: Minor

Control: Careful use of herbicides.